

# Company Information Pack

## Sumac Precision Engineering Ltd



# Sumac Scope of Supply

Precision engineering including turning & milling, both manual & CNC with CAD/CAM programming together with grinding including surface, cylindrical & honing, fabrication including welding, laser cutting, folding & forming and general assembly and kitting of products within many sectors



# Sumac Approvals & Policies

		
<p>ISO 9001:2015 Exclusion from Scope Design and Development (Para 8.3)</p>	<p>JOSCAR</p>	<p>CYBER ESSENTIALS CERTIFICATE OF ASSURANCE</p>
<p>Quality Policy</p>	<p>Health and Safety Policy</p>	<p>Environmental Management Policy</p>
<p>Disaster Recovery Policy</p>	<p>RoHS Compliance Statement</p>	<p>Reach Compliance Statement</p>
<p>Anti-Counterfeit Policy</p>	<p>Responsible Minerals Sourcing Policy</p>	<p>Modern Slavery Policy</p>
<p>Latest revisions of our approvals and policies are available via our web page <a href="http://www.sumac.co.uk">www.sumac.co.uk</a></p>		

# Sumac Manufacturing Capabilities

			
<p>CNC MILLING 3, 4 &amp; 5 Axis Including Automation</p>	<p>CNC TURNING 2 Axis to 9 Axis</p>	<p>MANUAL MILLING</p>	<p>MANUAL TURNING</p>
			
<p>GRINDING &amp; HONING</p>	<p>FABRICATION &amp; WELDING</p>	<p>SHEET METAL FORMING &amp; LASER CUTTING</p>	<p>ASSEMBLY</p>
<p>Full list of plant and capabilities is available via our web page  <a href="http://www.sumac.co.uk">www.sumac.co.uk</a></p>			

# Sumac Inspection Capabilities



KEYENCE IM8030  
Contactless Measurement  
Measurement Area 300 x 200 mm



FARO ARM GAUGE

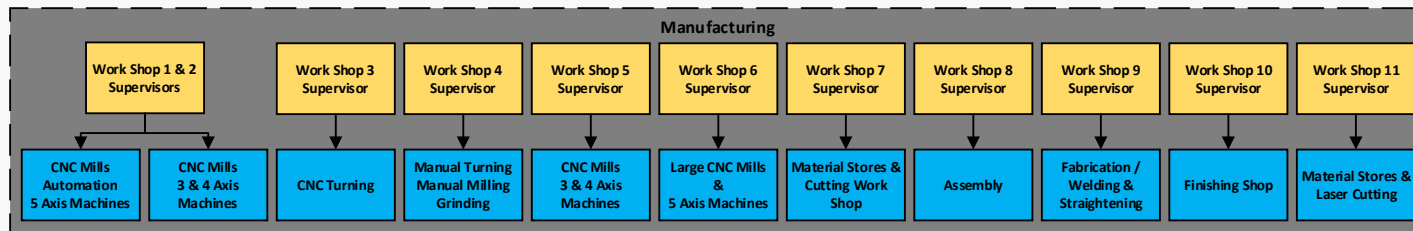
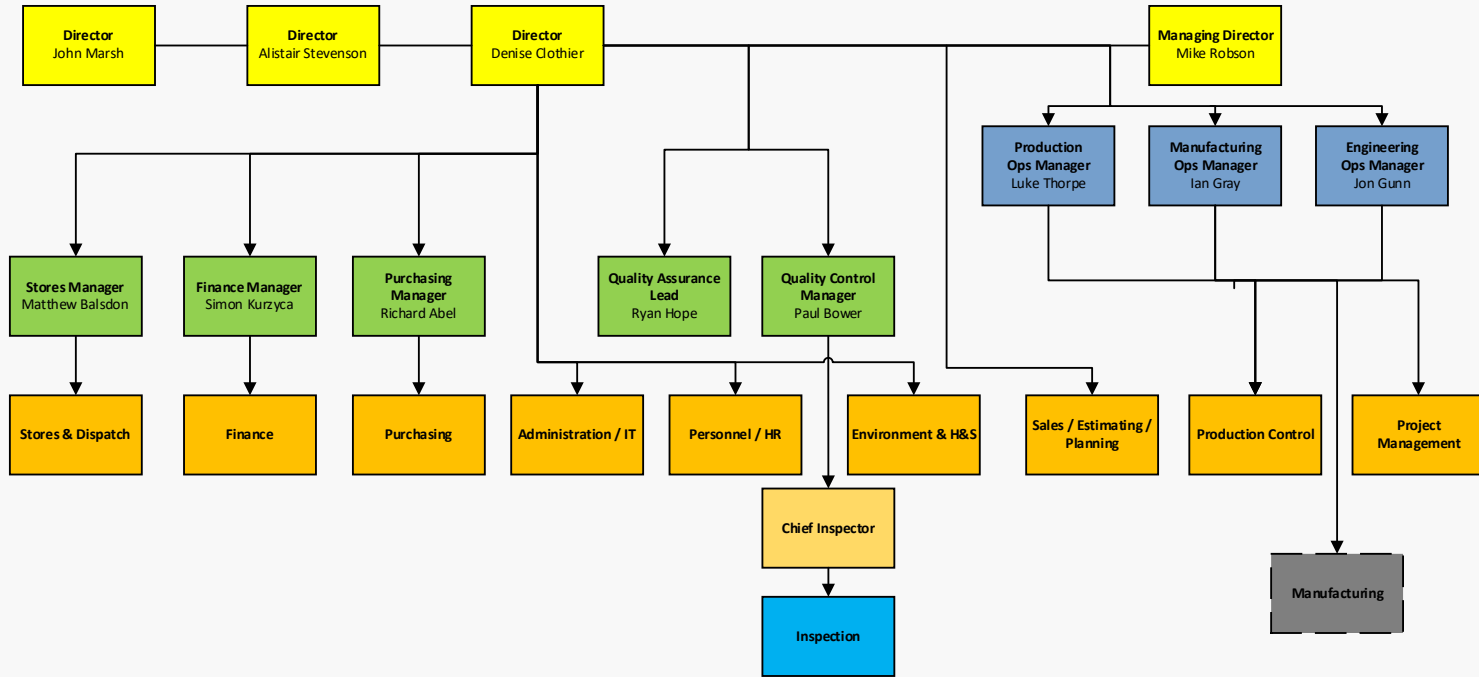


CMM  
Measurement Area 1.1m x 0.7m






FAI Reports to  
AS9102

# Sumac Company Structure



# Sumac Contact Details

Department	Email	Phone	Address
 Sales & Estimating	Sales@Sumac.co.uk	+44 (0)1305 775535	26 Cambridge Road, Granby Industrial Estate, Weymouth DT4 9TJ
 Finance	Accounts@Sumac.co.uk		
 Quality	Quality@Sumac.co.uk		



## Sumac Commitment



- Quality Control
- On Time Delivery
- Competitive prices and lead times
- Project / Supply Chain Management
- Flexibility to individual customer requirements

*“Sumac combines technologically advanced machinery with traditional skills....to give you consistent quality, competitive prices and reliable delivery.”*

